

LIGHTWEIGHT
& PERFECT FOR
HOMEOWNERS!



F602V

FORCE™ BLOWERS

F602V, F602X

(Vanguard® or Briggs & Stratton®)

At only 89 pounds (F602V), or 83 pounds (F602X), this unit is one of the lightest in its class making it a breeze to roll through the yard. Ideal for residential cleanup, it costs little more than a backpack, but is almost 2.5 times more powerful so you'll get your work done faster with less fatigue. New folding handle for easy storage and transport! Backed by a 1-year limited warranty, 3-year limited Vanguard engine warranty and 2-year limited Briggs & Stratton engine warranty (consumer); 1-year (commercial)**



Air volume = 2.3x backpacks*

F902H, F1002V & F1002SPV

(Honda® or Vanguard®)



F902H



F1002SPV



Text "blower"
to 33988 US or
33433 Canada†



F902 Air volume = 3.8x backpacks*



F1002 Air volume = 3.8x backpacks*

MODEL	ENGINE	VELOCITY	FAN	DISCHARGE	WEIGHT	FRONT WHEELS	REAR WHEELS	LENGTH	WIDTH	HEIGHT
F602V	169cc Vanguard	Just under 200 mph	16" 16-blade Single Shot Composite	3.5" (9 cm)	89 lb (40 kg)	8" x 3" Semi-pneumatic	10" x 3" Pneumatic	43.5" (111 cm)	22" (56 cm)	26" (housing), 45" (handle)
F602X	208cc Briggs & Stratton	Just under 200 mph	16" 16-blade Single Shot Composite	3.5" (9 cm)	83 lb (37 kg)	8" x 3" Semi-pneumatic	10" x 3" Pneumatic	43.5" (111 cm)	22" (56 cm)	26" (housing), 45" (handle)
F902H	262cc Honda	Just under 200 mph	17" 16-blade Single Shot Composite	4" (10 cm)	143 lb (65 kg)	10" x 3" Pneumatic	13" x 5" Pneumatic	58" (147 cm)	29.25" (74 cm)	32.5" (housing), 45" (handle)
F1002V	305cc Vanguard	Just under 200 mph	17" 16-blade Single Shot Composite	4" (10 cm)	143 lb (65 kg)	10" x 3" Pneumatic	13" x 5" Pneumatic	58" (147 cm)	29.25" (74 cm)	32.5" (housing), 45" (handle)
F1002SPV	305cc Vanguard	Just under 200 mph	17" 16-blade Single Shot Composite	4" (10 cm)	164 lb (74 kg)	10" x 3" Pneumatic	13" x 5" Pneumatic	58" (147 cm)	29.25" (74 cm)	32.5" (housing), 45" (handle)

*Relative to most large backpacks. In accordance with ANSI 175.2 standard.

**Complete warranty details can be found in Operator's Manuals.

†Data rates may apply.

Not all units are CA approved. See your dealer.



F1302SPH

F1302H & F1302SPH

(Honda®)

F1402V & F1402SPV

(Vanguard®)

Professional power and productivity, these units are a favorite for full-size landscapers, seal coaters, schools, parks departments, cemeteries, resorts, street departments, golf and estate properties. 3-year limited engine warranty, 2-year limited machine warranty, 5-year limited housing warranty.**



F1302 Air volume = 6.2x backpacks*



F1402 Air volume = 6.2x backpacks*



F1402SPV

ALL MODELS WITH SELF-PROPELLED OPTION!



F14 Vanguard-powered engines with **cyclonic air filtration** extends air filter replacement intervals up to 600 hours and advanced oil management system extends oil change intervals up to 200 hours.

F1802V & F1802SPV

(Vanguard®)

The ultimate in volume and power! A 6" discharge with air velocity of just under 200 mph will blow and push leaves and debris farther so you can clean up faster than with any other blower in our lineup. Most manufacturers don't even make 'em! 3-year limited engine warranty, 2-year limited machine warranty, 5-year limited housing warranty.**



Air volume = 7x backpacks*



F1802SPV

MODEL	ENGINE	VELOCITY	FAN	DISCHARGE	WEIGHT	FRONT WHEELS	REAR WHEELS	LENGTH	WIDTH	HEIGHT
F1302H	393cc Honda	Just under 200 mph	17" 16-blade Single Shot Composite	5" (13 cm)	152 lb (69 kg)	10" x 3" Pneumatic	13" x 5" Pneumatic	58" (147 cm)	28.5" (72 cm)	32.5" (housing), 45" (handle)
F1302SPH	393cc Honda	Just under 200 mph	17" 16-blade Single Shot Composite	5" (13 cm)	173 lb (79 kg)	10" x 3" Pneumatic	13" x 5" Pneumatic	58" (147 cm)	28.5" (72 cm)	32.5" (housing), 45" (handle)
F1402V	408cc Vanguard	Just under 200 mph	17" 16-blade Single Shot Composite	5" (13 cm)	157 lb (71 kg)	10" x 3" Pneumatic	13" x 5" Pneumatic	58" (147 cm)	28.5" (72 cm)	32.5" (housing), 45" (handle)
F1402SPV	408cc Vanguard	Just under 200 mph	17" 16-blade Single Shot Composite	5" (13 cm)	171 lb (77 kg)	10" x 3" Pneumatic	13" x 5" Pneumatic	58" (147 cm)	28.5" (72 cm)	32.5" (housing), 45" (handle)
F1802V	570cc Vanguard	Just under 200 mph	17" 16-blade Single Shot Composite	6" (15 cm)	179 lb (81 kg)	10" x 3" Pneumatic	13" x 5" Pneumatic	58" (147 cm)	28.5" (72 cm)	32.5" (housing), 45" (handle)
F1802SPV	570cc Vanguard	Just under 200 mph	17" 16-blade Single Shot Composite	6" (15 cm)	189 lb (86 kg)	10" x 3" Pneumatic	13" x 5" Pneumatic	58" (147 cm)	28.5" (72 cm)	32.5" (housing), 45" (handle)

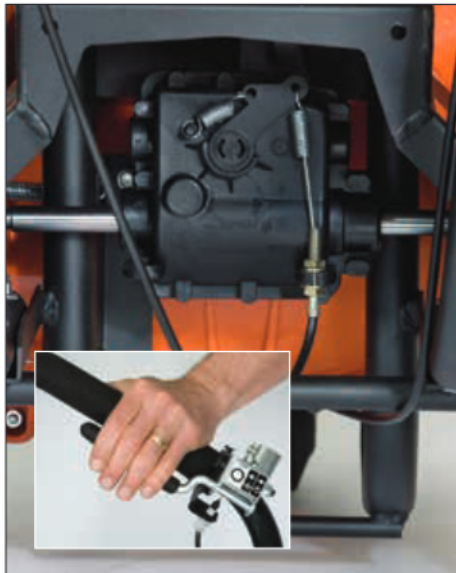
*Relative to most large backpacks. In accordance with ANSI 175.2 standard.
 **Complete warranty details can be found in Operator's Manuals.

FORCE™ BLOWERS

FORCE™ FEATURES / BENEFITS / ACCESSORIES



Aim N Shoot™ directs the airflow where you need it most with fingertip control and is lockable for single positions. Air is up to 52% more concentrated vs. square steel discharge for higher discharge speeds and a better combination of CFM and velocity to get your work done.



Self-propelled Forget the fatigue associated with pushing blowers. The 10 gross HP† Vanguard, 13 gross HP† Honda, 14 gross HP† Vanguard and 18 gross HP† Vanguard engines have self-propelled options to increase productivity!



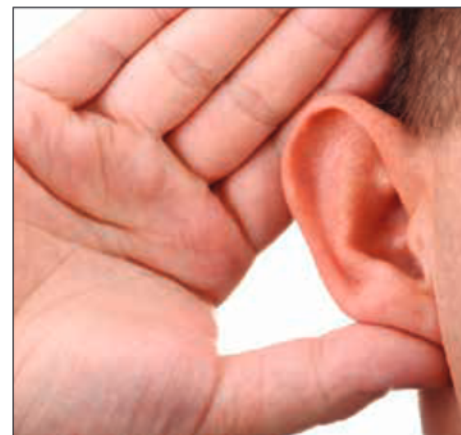
Smooth, rounded housing vs. steel eliminates air voids for quiet output and maximum performance! Proven design won't rust or dent! Backed by a 5-year limited warranty.** Plus, compare against pushing the weight of steel!



Force blowers are up to 30% lighter than other units on the market. Easier to push and far more productive.



Advanced fan technology features a single shot 16-blade, closed face fan. That's twice as many blades as most manufacturers and is far lighter than steel fans and easier to start on cold days. It's standard on all models and is the ultimate in performance and reliability!



Quietest on the market The quiet operation of the Force™ compared to backpacks and steel blowers is a welcomed relief among users and in neighborhoods.

**Complete warranty details can be found in Operator's Manuals.

†Power rated by engine manufacturer.

Vanguard: All power levels are stated gross horsepower at 3600 RPM per SAE J1940 as rated by Briggs & Stratton.

Not all units are CA approved. See your dealer.



Forward discharge Improved design of soft rubber is standard on F9, F10, F13 and F14. (Not available on F18.) It's a snap to install and is perfect for cleaning along walls and fences! (Optional kit on F6 models. Part No. 441130)



Caster wheel kit allows more maneuverability in tight spaces for moving airflow from side to side, without off-weighting the front wheel. (Optional for F9, F10, F13, F14 and F18 models only. Part No. 440293)



Quick hold down kit Quick trailer lock down attachment saves time. (Optional for F9, F10, F13, F14 and F18 models only. Part No. 440120)



Parking brake kit prevents roll-aways on inclines and saves relocation time when you need to step away. (Optional for F9, F10, F13, F14 and F18 models only. Part No. 440140)



10-ft hose kit easily fits over nozzle to direct airflow into hard to reach spaces. 4"D x 10'L. (Optional for F6 models only. Part No. 441166)



Foam filled front tire Flat free tire is lightweight and rolls easily over terrain. (Optional for F9, F10, F13, F14 and F18 models only. Part No. 440279)